

YAMAHA FAZER 700



CLASSIC

JAPANESE FOLK TRAMMERS

Through the decades, the Japanese motorcycle industry has produced a wide variety of bikes, from the classic to the modern. One of the most popular styles is the folk trammer, a bike that is both practical and stylish. These bikes are often used for commuting and are known for their reliability and ease of maintenance.

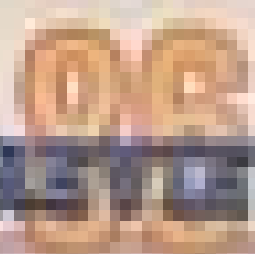


The Japanese folk trammer is a popular choice for commuters and those who value a simple, reliable motorcycle. These bikes are often equipped with features like a front fender, a rear rack, and a comfortable seat. They are also known for their fuel efficiency and ease of maintenance. The Japanese motorcycle industry has a long history of producing high-quality, reliable bikes, and the folk trammer is a testament to their expertise.

The Japanese folk trammer is a popular choice for commuters and those who value a simple, reliable motorcycle. These bikes are often equipped with features like a front fender, a rear rack, and a comfortable seat. They are also known for their fuel efficiency and ease of maintenance. The Japanese motorcycle industry has a long history of producing high-quality, reliable bikes, and the folk trammer is a testament to their expertise.







TEST DRIVE



...the engine is a 1,000-cc, four-cylinder, liquid-cooled, DOHC, 16-valve unit. It's a real nice engine, and it's got a lot of power. The torque is really good, and the acceleration is really good. The bike is really easy to ride, and it's really fun to ride. The suspension is really good, and the brakes are really good. The bike is really well built, and it's really reliable. The price is really good, and the warranty is really good. The bike is really a great value for the money. It's a really nice bike, and it's really a great choice for anyone who wants a reliable, fun-to-ride motorcycle.

...the engine is a 1,000-cc, four-cylinder, liquid-cooled, DOHC, 16-valve unit. It's a real nice engine, and it's got a lot of power. The torque is really good, and the acceleration is really good. The bike is really easy to ride, and it's really fun to ride. The suspension is really good, and the brakes are really good. The bike is really well built, and it's really reliable. The price is really good, and the warranty is really good. The bike is really a great value for the money. It's a really nice bike, and it's really a great choice for anyone who wants a reliable, fun-to-ride motorcycle.

...the engine is a 1,000-cc, four-cylinder, liquid-cooled, DOHC, 16-valve unit. It's a real nice engine, and it's got a lot of power. The torque is really good, and the acceleration is really good. The bike is really easy to ride, and it's really fun to ride. The suspension is really good, and the brakes are really good. The bike is really well built, and it's really reliable. The price is really good, and the warranty is really good. The bike is really a great value for the money. It's a really nice bike, and it's really a great choice for anyone who wants a reliable, fun-to-ride motorcycle.



THE HISTORY OF THE TRIUMPH TIGER

The Triumph Tiger is a classic motorcycle that has been around since the 1950s. It is known for its reliability and performance. The Tiger has a rich history and has been a popular choice for many riders. It is a classic that has stood the test of time and is still going strong today.



The Triumph Tiger is a classic motorcycle that has been around since the 1950s. It is known for its reliability and performance. The Tiger has a rich history and has been a popular choice for many riders. It is a classic that has stood the test of time and is still going strong today.

The Triumph Tiger is a classic motorcycle that has been around since the 1950s. It is known for its reliability and performance. The Tiger has a rich history and has been a popular choice for many riders. It is a classic that has stood the test of time and is still going strong today.

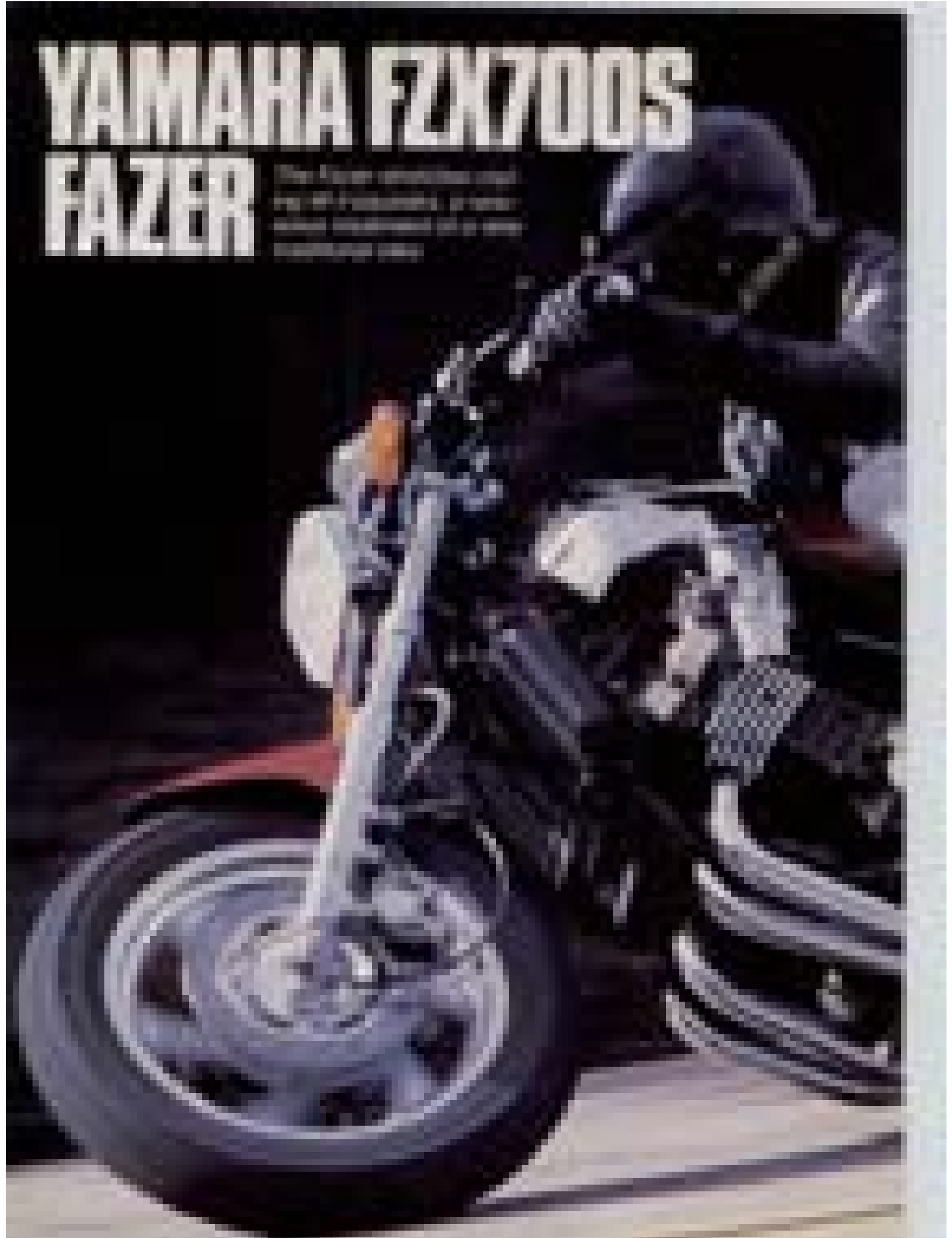


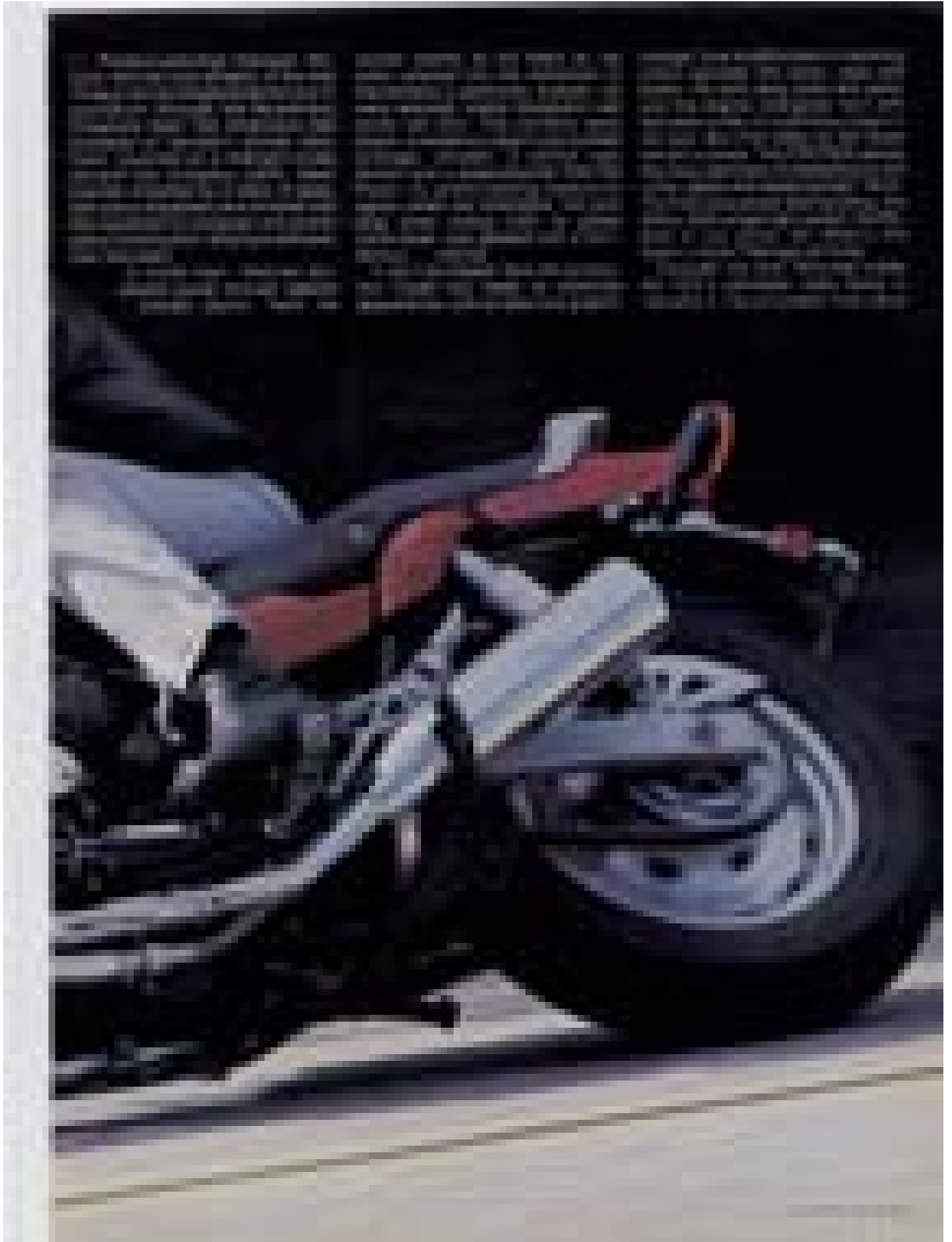
The Fazer. It doesn't
fall into a category.
It creates one.



YAMAHA FZ1700S FAZER

Il motore è un 1700 cc, 4 cilindri, 16 valvole, con iniezione elettronica. La velocità massima è di 200 km/h. Il consumo è di 18 km/l. Il prezzo è di 12.500.000.000.







YAMAHA FAZER

The Yamaha Fazer is a sporty, fuel-injected motorcycle designed for performance and reliability. It features a powerful engine, a sleek fairing, and a comfortable riding posture. The bike is equipped with disc brakes, a multi-speed transmission, and a fuel injection system for optimal fuel economy and power delivery. The Fazer is available in various configurations, including standard, ABS, and limited editions, to suit different rider preferences and budgets.

The Yamaha Fazer is a sporty, fuel-injected motorcycle designed for performance and reliability. It features a powerful engine, a sleek fairing, and a comfortable riding posture. The bike is equipped with disc brakes, a multi-speed transmission, and a fuel injection system for optimal fuel economy and power delivery. The Fazer is available in various configurations, including standard, ABS, and limited editions, to suit different rider preferences and budgets.



The Yamaha Fazer is a sporty, fuel-injected motorcycle designed for performance and reliability. It features a powerful engine, a sleek fairing, and a comfortable riding posture. The bike is equipped with disc brakes, a multi-speed transmission, and a fuel injection system for optimal fuel economy and power delivery. The Fazer is available in various configurations, including standard, ABS, and limited editions, to suit different rider preferences and budgets.



The motorcycle industry has seen a resurgence in popularity in recent years, with many riders returning to the open road. This is largely due to the industry's focus on creating more powerful and reliable machines that can handle a variety of riding conditions. Additionally, the industry has invested heavily in marketing and branding, which has helped to attract a new generation of riders. As a result, the motorcycle industry is expected to continue to grow in the coming years.

The motorcycle industry has a long and rich history, and it continues to evolve and grow. One of the most significant factors in the industry's success is its focus on innovation and quality. Manufacturers have spent billions of dollars on research and development, resulting in a wide range of motorcycles that offer everything from classic styling to cutting-edge technology. This commitment to excellence has earned the industry a reputation for reliability and performance, which has helped to attract a loyal following of riders. As the industry continues to grow, it is likely that we will see even more innovation and quality in the years ahead.

The motorcycle industry is a dynamic and exciting one, and it offers a unique experience for riders of all ages and backgrounds. Whether you are a seasoned rider or a beginner, there is always something new to discover in the world of motorcycles. From the thrill of the open road to the camaraderie of the riding community, the industry offers a wealth of opportunities for enjoyment and adventure. As the industry continues to grow, it is likely that we will see even more exciting developments in the years ahead.

YAMAHA FACTS

The Yamaha Motor Company, Ltd. is a leading manufacturer of motorcycles, scooters, and marine engines. Founded in 1955, the company has a rich history of innovation and quality. Yamaha motorcycles are known for their reliability, performance, and distinctive styling. The company's commitment to excellence is reflected in its products, which are sold in over 100 countries. Yamaha's success is a testament to its dedication to craftsmanship and customer satisfaction. The company's diverse product line includes everything from entry-level commuter bikes to high-performance sport bikes. Yamaha's marine engines are also highly regarded for their power and durability. The company's global presence is a result of its strategic marketing and distribution efforts. Yamaha's focus on research and development ensures that its products remain at the forefront of the industry. The company's strong brand identity and loyal customer base have made it a household name in the motorcycle world. Yamaha's commitment to safety and environmental friendliness is also a key part of its corporate philosophy. The company's products are designed to provide a safe and enjoyable riding experience. Yamaha's dedication to quality and innovation has earned it a reputation as one of the most respected manufacturers in the industry. The company's success is a testament to its commitment to excellence and customer satisfaction. Yamaha's diverse product line and global presence make it a leader in the motorcycle market. The company's focus on research and development ensures that its products remain at the forefront of the industry. Yamaha's strong brand identity and loyal customer base have made it a household name in the motorcycle world. Yamaha's commitment to safety and environmental friendliness is also a key part of its corporate philosophy. The company's products are designed to provide a safe and enjoyable riding experience. Yamaha's dedication to quality and innovation has earned it a reputation as one of the most respected manufacturers in the industry. The company's success is a testament to its commitment to excellence and customer satisfaction.



YAMAHA FAIR

YAMAHA FAIR



YAMAHA FAIR



YAMAHA FAIR

YAMAHA FAIR

YAMAHA FACT

Yamaha is a leading manufacturer of motorcycles, scooters, and ATVs. The company is known for its reliability and performance. Yamaha motorcycles are popular among riders for their smooth handling and powerful engines. The company also produces a wide range of scooters and ATVs, catering to different needs and preferences. Yamaha's commitment to quality and innovation has made it a trusted name in the industry.

YAMAHA FACT

Yamaha is a leading manufacturer of motorcycles, scooters, and ATVs. The company is known for its reliability and performance. Yamaha motorcycles are popular among riders for their smooth handling and powerful engines. The company also produces a wide range of scooters and ATVs, catering to different needs and preferences. Yamaha's commitment to quality and innovation has made it a trusted name in the industry.

Yamaha is a leading manufacturer of motorcycles, scooters, and ATVs. The company is known for its reliability and performance. Yamaha motorcycles are popular among riders for their smooth handling and powerful engines. The company also produces a wide range of scooters and ATVs, catering to different needs and preferences. Yamaha's commitment to quality and innovation has made it a trusted name in the industry.



The diagram features a grid with a blue line graph that starts at the bottom left, rises to a peak, and then descends. The grid lines are light gray, and the background is a light tan color. The blue line is thick and clearly visible against the grid.



1997 OFFICIAL LICENSED PRODUCT

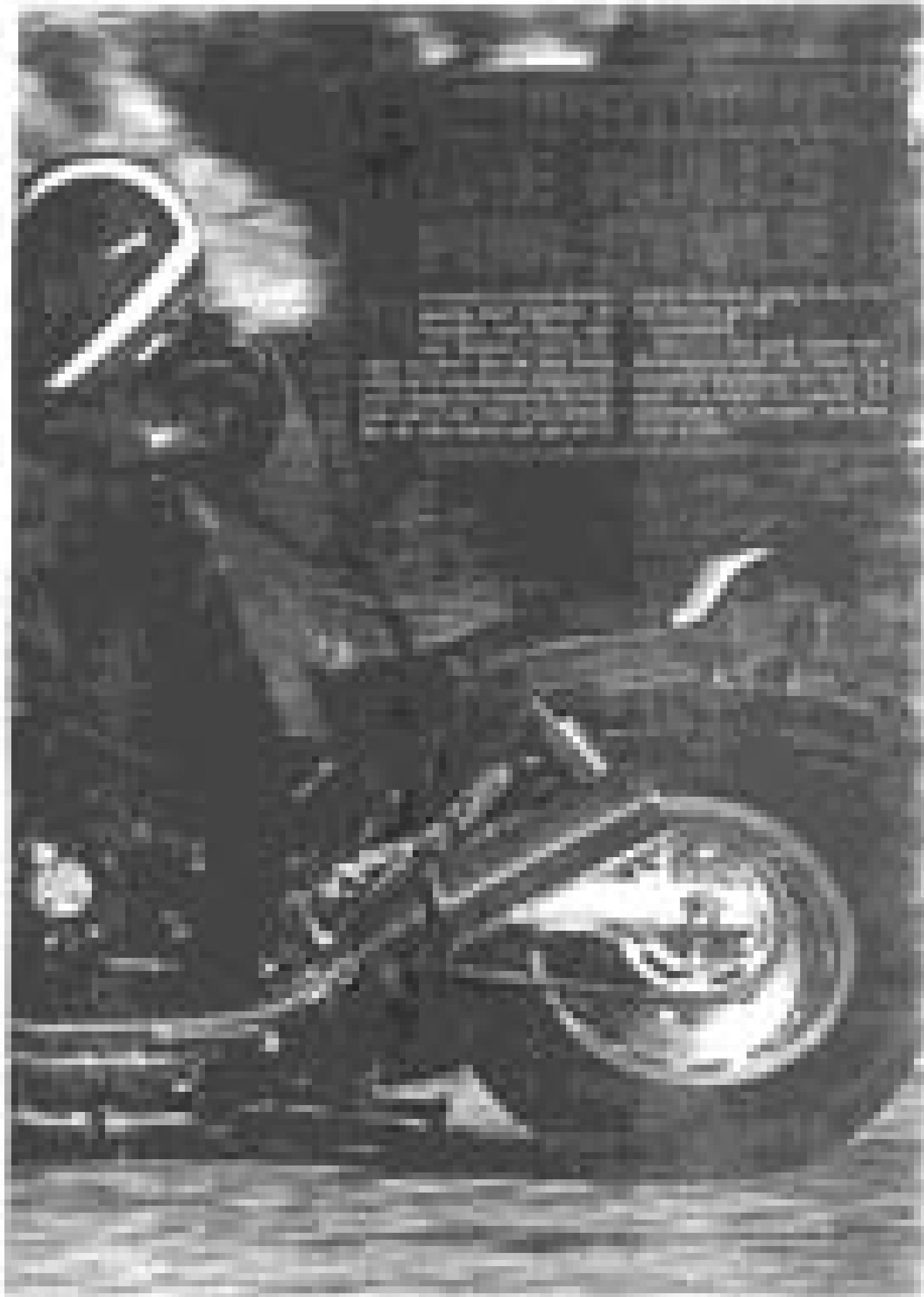
COCA-COLA

FEZER



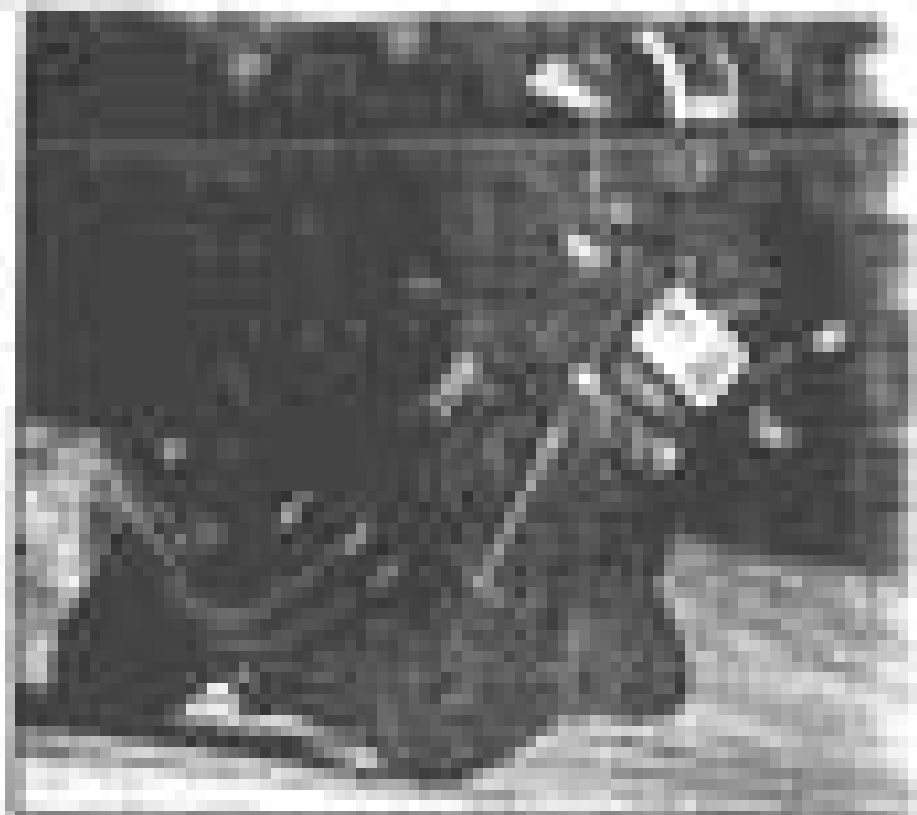
Q





REARVIEW MIRROR

It's a common sight: a motorcycle parked in a parking lot, its engine idling, with a rider leaning back in the seat, looking in the rearview mirror. The rider is checking for traffic behind them, a habit that's become a staple of motorcycle riding. But what if the rider is looking in the mirror for a different reason? What if they're looking for a sign of a police officer or a security guard? What if they're looking for a sign of a potential threat?



It's a common sight: a motorcycle parked in a parking lot, its engine idling, with a rider leaning back in the seat, looking in the rearview mirror. The rider is checking for traffic behind them, a habit that's become a staple of motorcycle riding. But what if the rider is looking in the mirror for a different reason? What if they're looking for a sign of a police officer or a security guard? What if they're looking for a sign of a potential threat?

It's a common sight: a motorcycle parked in a parking lot, its engine idling, with a rider leaning back in the seat, looking in the rearview mirror. The rider is checking for traffic behind them, a habit that's become a staple of motorcycle riding. But what if the rider is looking in the mirror for a different reason? What if they're looking for a sign of a police officer or a security guard? What if they're looking for a sign of a potential threat?

It's a common sight: a motorcycle parked in a parking lot, its engine idling, with a rider leaning back in the seat, looking in the rearview mirror. The rider is checking for traffic behind them, a habit that's become a staple of motorcycle riding. But what if the rider is looking in the mirror for a different reason? What if they're looking for a sign of a police officer or a security guard? What if they're looking for a sign of a potential threat?

It's a common sight: a motorcycle parked in a parking lot, its engine idling, with a rider leaning back in the seat, looking in the rearview mirror. The rider is checking for traffic behind them, a habit that's become a staple of motorcycle riding. But what if the rider is looking in the mirror for a different reason? What if they're looking for a sign of a police officer or a security guard? What if they're looking for a sign of a potential threat?

It's a common sight: a motorcycle parked in a parking lot, its engine idling, with a rider leaning back in the seat, looking in the rearview mirror. The rider is checking for traffic behind them, a habit that's become a staple of motorcycle riding. But what if the rider is looking in the mirror for a different reason? What if they're looking for a sign of a police officer or a security guard? What if they're looking for a sign of a potential threat?



It's a common sight: a motorcycle parked in a parking lot, its engine idling, with a rider leaning back in the seat, looking in the rearview mirror. The rider is checking for traffic behind them, a habit that's become a staple of motorcycle riding. But what if the rider is looking in the mirror for a different reason? What if they're looking for a sign of a police officer or a security guard? What if they're looking for a sign of a potential threat?

It's a common sight: a motorcycle parked in a parking lot, its engine idling, with a rider leaning back in the seat, looking in the rearview mirror. The rider is checking for traffic behind them, a habit that's become a staple of motorcycle riding. But what if the rider is looking in the mirror for a different reason? What if they're looking for a sign of a police officer or a security guard? What if they're looking for a sign of a potential threat?

CONSTRUCTION MANAGEMENT FOR THE PROJECT

CONSTRUCTION
 The construction phase of the project involves the physical building of the project. This phase is critical to the success of the project and requires careful planning and management. The construction manager is responsible for coordinating all construction activities, including procurement, scheduling, and quality control. The construction manager must ensure that the project is completed on time, within budget, and to the required quality standards. The construction manager must also ensure that all safety and environmental regulations are followed. The construction manager must also ensure that all construction activities are properly documented and reported to the project sponsor.

CONSTRUCTION
 The construction phase of the project involves the physical building of the project. This phase is critical to the success of the project and requires careful planning and management. The construction manager is responsible for coordinating all construction activities, including procurement, scheduling, and quality control. The construction manager must ensure that the project is completed on time, within budget, and to the required quality standards. The construction manager must also ensure that all safety and environmental regulations are followed. The construction manager must also ensure that all construction activities are properly documented and reported to the project sponsor.

CONSTRUCTION
 The construction phase of the project involves the physical building of the project. This phase is critical to the success of the project and requires careful planning and management. The construction manager is responsible for coordinating all construction activities, including procurement, scheduling, and quality control. The construction manager must ensure that the project is completed on time, within budget, and to the required quality standards. The construction manager must also ensure that all safety and environmental regulations are followed. The construction manager must also ensure that all construction activities are properly documented and reported to the project sponsor.

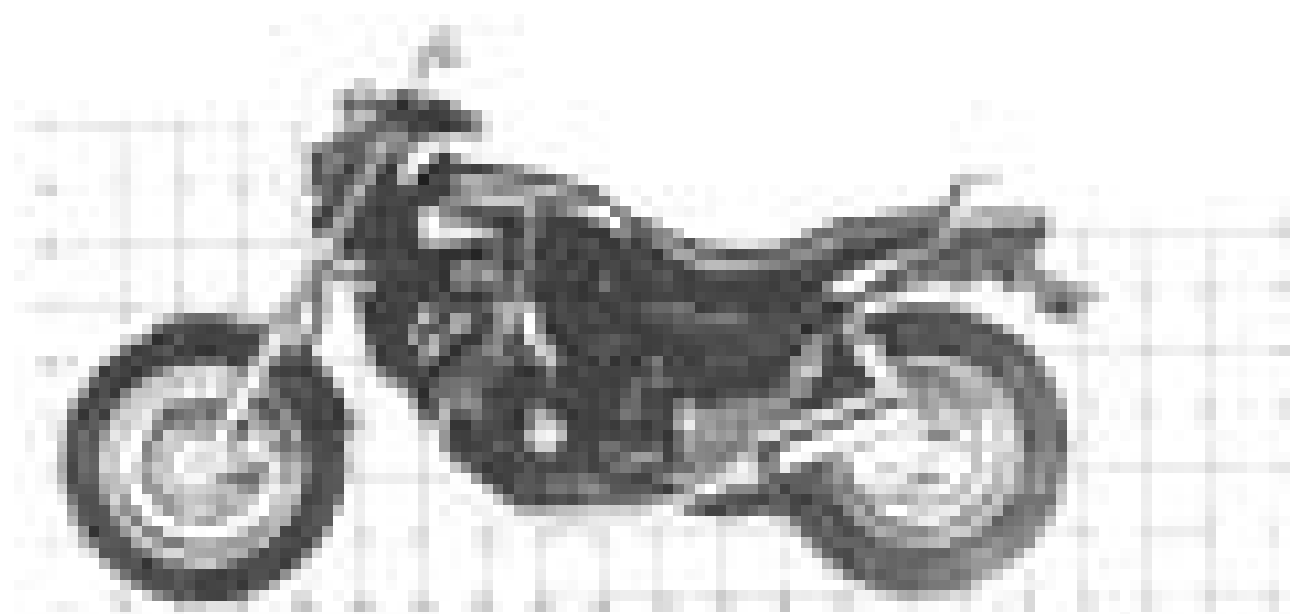
CONSTRUCTION
 The construction phase of the project involves the physical building of the project. This phase is critical to the success of the project and requires careful planning and management. The construction manager is responsible for coordinating all construction activities, including procurement, scheduling, and quality control. The construction manager must ensure that the project is completed on time, within budget, and to the required quality standards. The construction manager must also ensure that all safety and environmental regulations are followed. The construction manager must also ensure that all construction activities are properly documented and reported to the project sponsor.

CONSTRUCTION
 The construction phase of the project involves the physical building of the project. This phase is critical to the success of the project and requires careful planning and management. The construction manager is responsible for coordinating all construction activities, including procurement, scheduling, and quality control. The construction manager must ensure that the project is completed on time, within budget, and to the required quality standards. The construction manager must also ensure that all safety and environmental regulations are followed. The construction manager must also ensure that all construction activities are properly documented and reported to the project sponsor.

CONSTRUCTION
 The construction phase of the project involves the physical building of the project. This phase is critical to the success of the project and requires careful planning and management. The construction manager is responsible for coordinating all construction activities, including procurement, scheduling, and quality control. The construction manager must ensure that the project is completed on time, within budget, and to the required quality standards. The construction manager must also ensure that all safety and environmental regulations are followed. The construction manager must also ensure that all construction activities are properly documented and reported to the project sponsor.

CONSTRUCTION
 The construction phase of the project involves the physical building of the project. This phase is critical to the success of the project and requires careful planning and management. The construction manager is responsible for coordinating all construction activities, including procurement, scheduling, and quality control. The construction manager must ensure that the project is completed on time, within budget, and to the required quality standards. The construction manager must also ensure that all safety and environmental regulations are followed. The construction manager must also ensure that all construction activities are properly documented and reported to the project sponsor.

CONSTRUCTION
 The construction phase of the project involves the physical building of the project. This phase is critical to the success of the project and requires careful planning and management. The construction manager is responsible for coordinating all construction activities, including procurement, scheduling, and quality control. The construction manager must ensure that the project is completed on time, within budget, and to the required quality standards. The construction manager must also ensure that all safety and environmental regulations are followed. The construction manager must also ensure that all construction activities are properly documented and reported to the project sponsor.





**2011 HARLEY-DAVIDSON
SOFTAIL**

Harley-Davidson's Softail line of motorcycles is known for its classic cruiser styling and powerful performance. The 2011 model features a new paint scheme and updated engine components. It's designed for long-distance riding and offers a smooth, comfortable ride. The Softail is a popular choice for riders who want a classic look with modern performance.

**2011 HARLEY-DAVIDSON
SOFTAIL**

Harley-Davidson's Softail line of motorcycles is known for its classic cruiser styling and powerful performance. The 2011 model features a new paint scheme and updated engine components. It's designed for long-distance riding and offers a smooth, comfortable ride. The Softail is a popular choice for riders who want a classic look with modern performance.



**2011 HARLEY-DAVIDSON
SOFTAIL**

Harley-Davidson's Softail line of motorcycles is known for its classic cruiser styling and powerful performance. The 2011 model features a new paint scheme and updated engine components. It's designed for long-distance riding and offers a smooth, comfortable ride. The Softail is a popular choice for riders who want a classic look with modern performance.



Motorcycling's Biggest Factor: Innovations That'll Change the Game.
Our Year On The Road: an Odyssey of Faith, Fear, Finding

Rider

THE BEST OF MOTORCYCLING

— THE 2014 ISSUE —

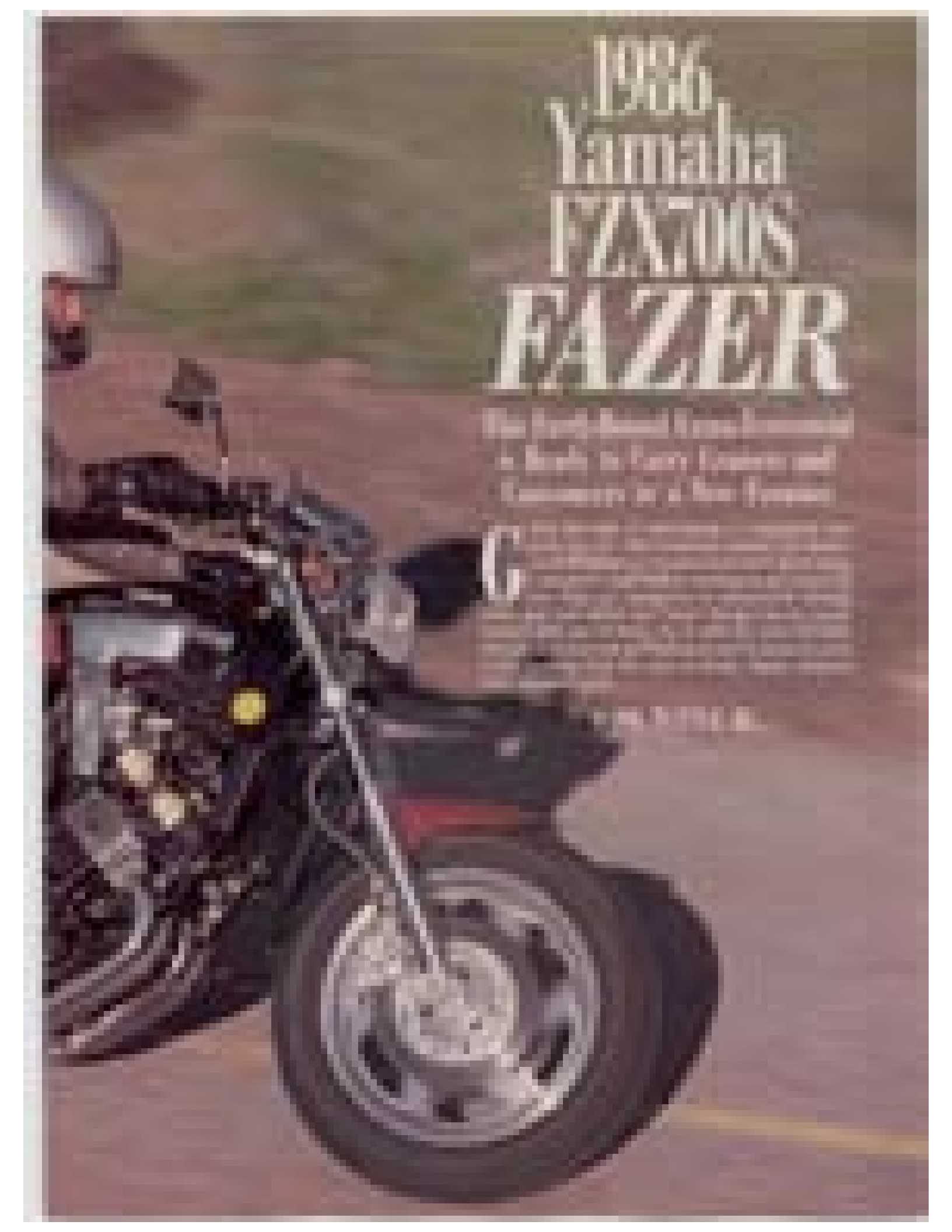
First Person on America's

WILDEST MOTORCYCLE

FAZER





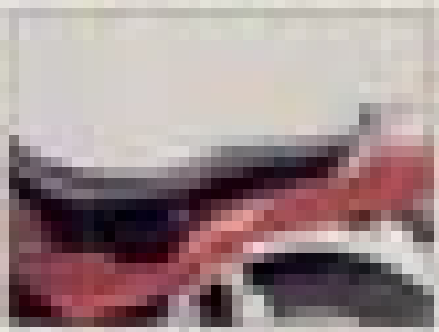


1986 Yamaha EXTREMES FAZER

The Fazer 700S is a new breed of road bike. It's a blend of power, precision and performance in a new package.

The Fazer 700S is a new breed of road bike. It's a blend of power, precision and performance in a new package. The Fazer 700S is a new breed of road bike. It's a blend of power, precision and performance in a new package.

YAMAHA MOTOR CO., LTD.



The first step in the process is to identify the problem. This can be done by looking at the symptoms and the location of the problem. Once the problem has been identified, the next step is to determine the cause. This can be done by looking at the components that are involved in the problem and by testing them to see if they are working properly. Once the cause has been identified, the next step is to repair the problem. This can be done by replacing the faulty component or by adjusting it so that it is working properly. Finally, the last step is to test the repair to make sure that it is working properly and that the problem has been resolved.

The second step in the process is to determine the cause of the problem. This can be done by looking at the components that are involved in the problem and by testing them to see if they are working properly. Once the cause has been identified, the next step is to repair the problem. This can be done by replacing the faulty component or by adjusting it so that it is working properly. Finally, the last step is to test the repair to make sure that it is working properly and that the problem has been resolved.

The third step in the process is to repair the problem. This can be done by replacing the faulty component or by adjusting it so that it is working properly. Finally, the last step is to test the repair to make sure that it is working properly and that the problem has been resolved.

The fourth step in the process is to test the repair. This can be done by looking at the symptoms and the location of the problem and by testing the components that are involved in the problem to see if they are working properly. Once the repair has been tested, the next step is to determine if the problem has been resolved. If the problem has not been resolved, the next step is to repeat the process from the beginning.

The fifth step in the process is to determine if the problem has been resolved. This can be done by looking at the symptoms and the location of the problem and by testing the components that are involved in the problem to see if they are working properly. Once the repair has been tested, the next step is to determine if the problem has been resolved. If the problem has not been resolved, the next step is to repeat the process from the beginning.

The sixth step in the process is to repeat the process from the beginning. This can be done by looking at the symptoms and the location of the problem and by testing the components that are involved in the problem to see if they are working properly. Once the repair has been tested, the next step is to determine if the problem has been resolved. If the problem has not been resolved, the next step is to repeat the process from the beginning.

The seventh step in the process is to determine if the problem has been resolved. This can be done by looking at the symptoms and the location of the problem and by testing the components that are involved in the problem to see if they are working properly. Once the repair has been tested, the next step is to determine if the problem has been resolved. If the problem has not been resolved, the next step is to repeat the process from the beginning.

The eighth step in the process is to repeat the process from the beginning. This can be done by looking at the symptoms and the location of the problem and by testing the components that are involved in the problem to see if they are working properly. Once the repair has been tested, the next step is to determine if the problem has been resolved. If the problem has not been resolved, the next step is to repeat the process from the beginning.

The ninth step in the process is to determine if the problem has been resolved. This can be done by looking at the symptoms and the location of the problem and by testing the components that are involved in the problem to see if they are working properly. Once the repair has been tested, the next step is to determine if the problem has been resolved. If the problem has not been resolved, the next step is to repeat the process from the beginning.

The tenth step in the process is to repeat the process from the beginning. This can be done by looking at the symptoms and the location of the problem and by testing the components that are involved in the problem to see if they are working properly. Once the repair has been tested, the next step is to determine if the problem has been resolved. If the problem has not been resolved, the next step is to repeat the process from the beginning.



Harley-Davidson
 motorcycles are
 popular among
 riders.

Harley-Davidson motorcycles are known for their distinctive V-twin engines and cruiser styling. The company's bikes are often associated with a sense of freedom and adventure. Harley-Davidson has a long history of producing high-quality motorcycles, and its reputation for reliability and performance is well-earned. The company's bikes are popular among riders of all ages and backgrounds, and they continue to be a major force in the motorcycle industry.

Harley-Davidson motorcycles are also known for their customizability. Riders can choose from a wide variety of accessories and upgrades to personalize their bikes. Harley-Davidson also offers a range of services, including maintenance and repair, to help riders keep their bikes in top condition. The company's commitment to customer service and support is another reason why Harley-Davidson motorcycles are so popular.

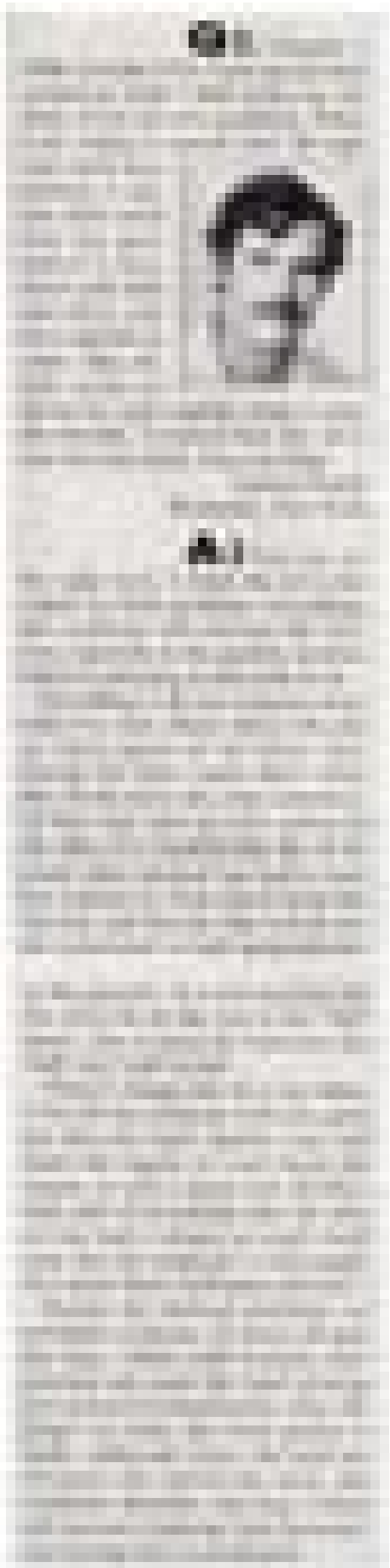
Harley-Davidson motorcycles are a symbol of American culture and freedom. They are a popular choice for riders who want a bike that is both reliable and stylish. Harley-Davidson motorcycles are also a great investment, as they tend to hold their value well over time. If you're looking for a motorcycle that will give you the Harley-Davidson experience, you'll want to consider a Harley-Davidson motorcycle.

Harley-Davidson Motorcycle Specifications	
Model	Year
Harley-Davidson Softail	2023
Harley-Davidson Heritage Softail	2023
Harley-Davidson Street Glide	2023
Harley-Davidson Road King	2023
Harley-Davidson Softail Heritage	2023
Harley-Davidson Street Glide Special	2023
Harley-Davidson Road King Special	2023
Harley-Davidson Softail Heritage Special	2023
Harley-Davidson Street Glide Special	2023
Harley-Davidson Road King Special	2023
Harley-Davidson Softail Heritage Special	2023

Harley-Davidson motorcycles are a symbol of American culture and freedom. They are a popular choice for riders who want a bike that is both reliable and stylish. Harley-Davidson motorcycles are also a great investment, as they tend to hold their value well over time. If you're looking for a motorcycle that will give you the Harley-Davidson experience, you'll want to consider a Harley-Davidson motorcycle.



R 6/91



R 2/94